



# Year 9

# Guide to Go4Schools

**Page 2: Introduction & logging on for the first time**

**Page 3: Student timetable & current assessment grades**

**Page 5: Targets and On-Track**

**Page 6: Effort, homework and self-regulation**

**Page 7: Attendance and behaviour**

**Page 8: Snapshot reports**

## **Introduction**

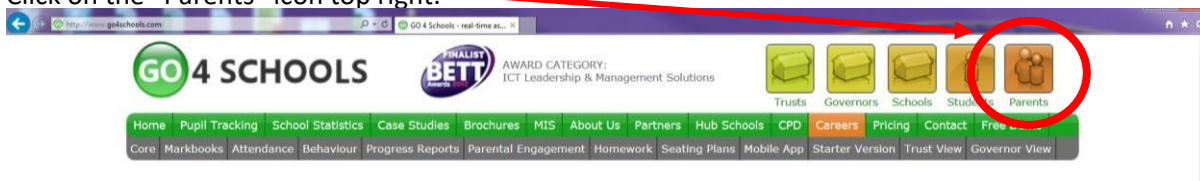
Go4Schools is a database where we record information about your child. It makes the information available through a website.

This is a huge step forward in the way we provide information for parents as it makes a lot of helpful information available easily and quickly. Attendance and behaviour information is updated daily and

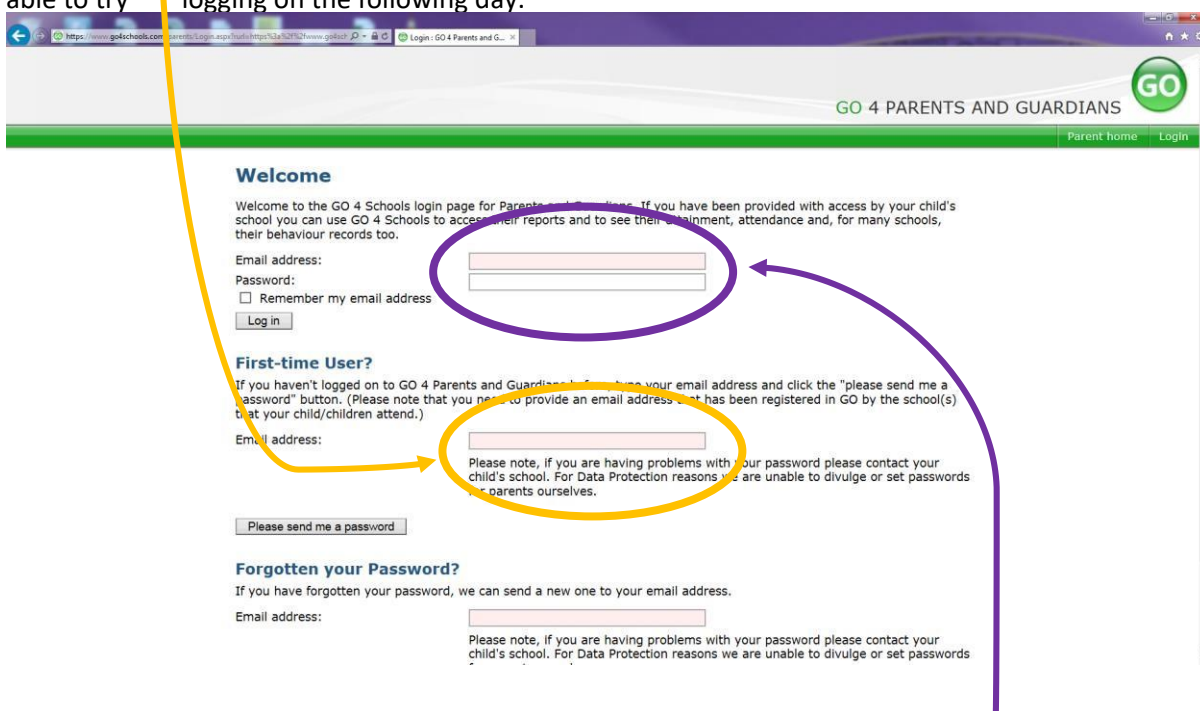
formal assessment data is made available shortly after the assessment rather than having to wait for a summary at an end of term report.

### **Logging on for the first time.**

1. Go to the Go 4 Schools website: [www.go4schools.com](http://www.go4schools.com)
2. Click on the “Parents” icon top right.



3. Under “First-time User?” enter the email address we hold on record for you and click “Please send me a password.” If you need to provide us with an email address please call the school office with the relevant details. Go4Schools will update overnight and you will be able to try logging on the following day.



4. Go4Schools will email you a temporary password which you then enter under the “Welcome” area. You can change the password once you have logged in.
5. If you do not receive a welcome email from Go4Schools, this is because we do not have your current email address on record. Please call the school office and they will update our records with the correct address. The server refreshes overnight so you will be able to log on the following day.

### **Student timetable**

You will automatically see today’s timetable. If the student has been marked present you will see a green box with a forward-slash (AM) or backward slash (PM) as in the picture below:

## Today's timetable

<b>Tu</b>	08:45 Comp. St. 9D Comp Mr A HOLMES BI1	09:45 Maths 9x Ma1 Miss M COELHO M6	10:45	11:05 English 9x Eng1 Miss A BLOOM E2	12:05	12:05 Geography 9B Geog3 Dr L CRANE-LUPTON H7	13:05	13:50 P.S.E 9T1 T Mr M BI3	14:10 Science 9 Ne Sci Miss F LETTS S5	15:10	15:10	16:10
-----------	---	---	-------	---	-------	---	-------	--	--	-------	-------	-------

[View full timetable](#)

If the student has been marked absent you will see a red box with an "N." Please be aware that sometimes a student may have to talk to their Head of House or be taking part in a special event, such as an instrumental music lesson, and this may explain the "N."

You can see the timetable for the week by clicking on the link just below the timetable "View full timetable"

### **Detailed Progress: "Current" assessments**

This section gives you all the formal assessments that have been carried out so far this year. As a minimum, teachers will input a formal assessment three times a year in time for the end of term parent meetings. Many teachers will add additional assessments as and when they are completed.

Year 9 is a transition year when we finish off KS3 studies and start preparing for GCSE and vocational qualifications. You will find several different types of assessments given.

The **maths and languages departments** use a progression Scale of 12 Steps to describe performance and these are set by Edexcel, the exam board they will ultimately take their languages and maths GCSEs with. This is then translated into a GCSE grade.

Steps range from 1 to 12 and demonstrate progress across all of the skill areas. Step 1 is the basic starting point and in languages assumes no prior knowledge of the language. Step 12 represents the highest GCSE grade. Students' achievement in the steps may fluctuate across the year as they tackle new and different topics and language.

The maths department report the step achieved so far. For example "5<sup>th</sup>" means Pearson Step 5.

The languages department report the step and also how well they have achieved that step through four letters: **B**eginning, **D**eveloping, **S**ecuring, **E**xcelling. So a student with "4-E" has achieved Pearson Step 4 and they are nearly ready to achieve Step 5.

English and PE continue with the KS3 mastery curriculum grades used in Year 7 & 8 which are:

	<b>In class..</b>	<b>What you should do next is..</b>
<b>Expert</b>	you work independently and in depth using higher order thinking and learning skills at all times. You regularly teach others and show leadership.	5% of students across the country reach Grade 9. Will you be one of them?
<b>Mastery</b>	you apply your learning in new and unfamiliar situations, in greater depth, using higher order skills in a range of contexts over time, and complete the more challenging classroom tasks.	add greater depth to your learning by working more independently, read more widely, take more of a lead in your own learning and in class.
<b>Secure</b>	you complete all main tasks each lesson and your skills and knowledge are mostly secure.	aim to deepen your learning by taking on more of the challenging tasks in class and for homework and by going into more depth in your work.
<b>Developing</b>	you complete most main tasks each lesson and your skills and knowledge are nearly secure.	make sure all your class and homework is finished to a good standard to secure your knowledge and skills
<b>Emerging</b>	you complete basic tasks and sometimes try the harder work	aim to make your learning secure by completing more of the harder tasks in class and for homework.
<b>Foundation</b>	you complete basic tasks with lots of help from others	make good use of all the support given to you so that you are able to complete more of the tasks in class with less help.

Engineering is a Level 1 course and uses grades “Pass,” “Just below pass” or “In danger of failing”

Combined Science is a double award GCSE and so reports two grades Eg. 4 / 5 (Equivalent to a GCSE grade 4 and a grade 5) Some students will choose triple science and this is considered in Year 10 and finalised in Year 11.

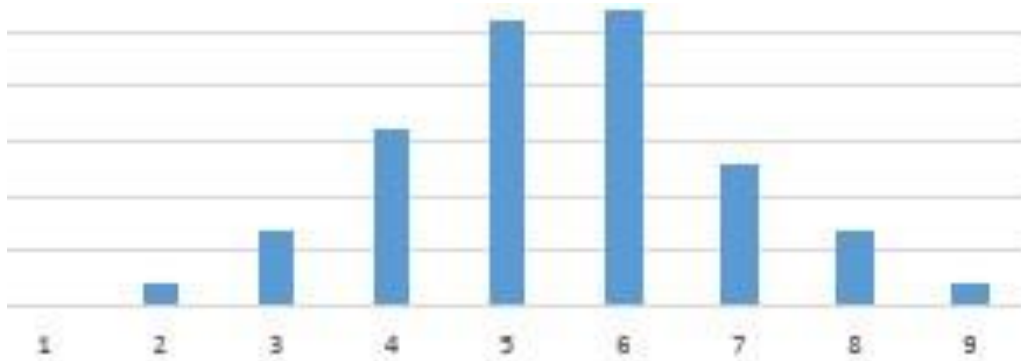
All other subjects use the GCSE grades 1 to 9 where 1 is the lowest grade and 9 is the highest. Grade 4 is roughly equal to the old grade C and is the minimum grade to achieve in all subjects if you wish to go on to further study in the sixth form or college. In addition, the new grade 5 is the minimum grade needed for the particular subjects that students go on to study in the sixth form. The new grades 7 to 9 are roughly equal to the old grades A & A\*.

Where an assessment is underlined (hyperlink) you will be able to click to see more detail about the individual assessments that make up the overall grade.

## Detailed Progress: Targets and On-Track

At Oxford Spires Academy we firmly believe in developing a growth mindset as defined by Professor Carol Dweck. Our own research shows that the more effort students make in class, the higher their grades will be. We believe that students have unlimited potential, but only if they work hard enough.

As an example, the graph below shows the GCSE grades achieved by students with average KS2 SATs results across England. You will see that the grades achieved range from GCSE grade 2 to the highest grade 9. We believe effort is what makes the difference between the students who reached the lowest and highest grades.



We also believe that when students set their own targets, using this information to help them, they are more likely to take the target seriously and work to achieve it. Students in Year 9 will spend the first two terms settling in to their new courses and then set their targets in term 3. These will be reviewed by teachers during term 4 and available in print on the snapshot reports at the end of term 4. They will be available on the Go4Schools website earlier but will be moderated by teachers during term 4 and may change. This is shown in the column titled “Target End Yr11” We monitor the targets to make sure no-one chooses a target below the national minimum expected grade. Our ethos is to aim high!

The “On-Track?” grade gives you the teacher’s professional judgement as to whether or not they are on track for that target. This cannot be a firm predictor of future achievement as this is completely dependent on the work ethic and revision schedule that the student adheres to in the future. However, it is helpful feedback to know how well a student is doing at the current time.

The grades used for the “On Track?” Section are:

**On-Track:** If you are on-track then you should continue to work as hard as you do and to increase the amount of revision you do leading up to the exams. You should reach your target if you do this.

**Just below track:** You are not on track to meet your target but should be able to catch up if you put more time into your work straight away. You should ask your teacher where you are falling behind and what you can do to catch up in time to make sure you meet your target.

**Not meeting potential:** You are a long way off your target. It is still possible for you to reach your target but only if you make significant change now. You should make and stick to a challenging homework and revision plan and change your daily routine so you spend more hours on schoolwork and less on the other things that take up your time. Ask your teachers for extra reading material and advice on what you need to do to improve. Use the BBC GCSE Bitesize website and other study materials to help.

**Consider a higher target:** You have made really good progress and could achieve a higher grade than your target. Talk to your teacher and agree a new target which the teacher can then change on Go4Schools.

### **Detailed Progress: Effort and Homework**

In our curriculum booklets you will also read more about our work on self-regulation, students taking responsibility for their learning and extending their knowledge and skills by working independently. This is why we give you feedback on homework completion (how often it is completed on time) and the quality of homework when it is done.

We use a simple RAG rating to give feedback on effort, homework completion and homework quality. In short, students should aim to be green which indicates they are doing everything properly. Amber shows that they are a little way off but with some adjustments could quickly catch up. Red shows that there is a problem and they need to make some big improvements. Purple is reserved for a small number of students in each class who are making exceptional effort compared to the rest of the class.

More specifically the words mean:

#### **Effort:**

Purple: Is an exceptionally hard worker

Green: Making a good effort in class

Amber: Is not making enough effort to achieve their potential in class

Red: Very rarely makes an effort or shows enthusiasm in class

#### **Homework completion**

Purple: Always hands homework in and meets all deadlines

Green: Always hands homework in

Amber: Has missed several deadlines

Red: Very poor record of homework completion

#### **Homework quality**

Purple: Exceptional homework

Green: Homework is regularly of a good standard

Amber: Homework is sometimes unsatisfactory or needs improvement

Red: Homework is frequently unsatisfactory and needs to be done again

### **Detailed Progress: Self Regulation**

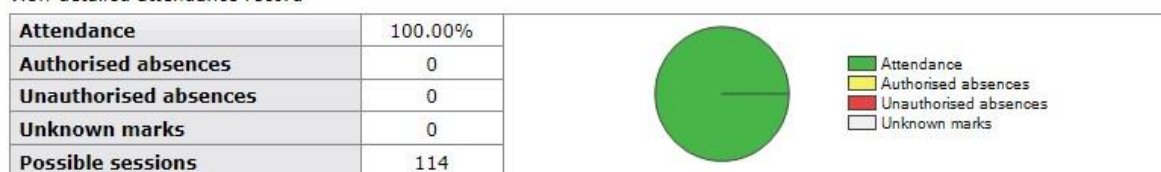
Through the year students will have opportunities to gain recognition for demonstrating good selfregulation. They will be awarded Purple, Gold, Silver and Bronze

## Attendance

A summary of attendance so far this year is given on the home page.

### Attendance

[View detailed attendance record](#)



If you click “View detailed attendance record” you can see the daily attendance and also attendance to individual subjects.

## Behaviour

When students complete good work or make good progress in class teachers may award them positive points which are:

- “HP” Housepoints. The number beside HP shows how many housepoints have been given. For example “HP4” means 4 housepoints.
- “BWF” “Best work first” The student has done their absolute best the first time round on a piece of work.
- “COMM” Commendation. This is for really exceptional work or progress and is worth 10 housepoints.

When students don’t meet academy expectations they receive negative points. Some examples are:

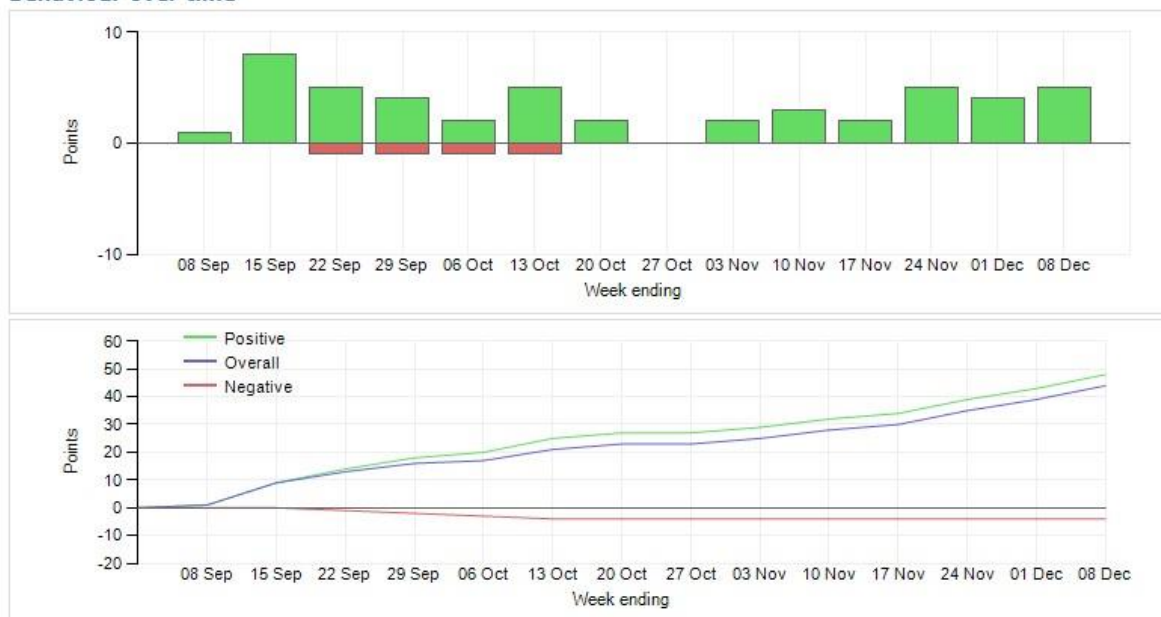
- “DET” Detention given by the class teacher.
- “HWL” Homework handed in late.
- “ATTD” Attitude, defiance.
- “DIS” Disruption to learning.
- “IW” Inadequate work.
- “MS” Did not attend teacher’s detention.
- “MDF” Did not attend Head of Faculty’s detention.
- “MOB” Using mobile phone inappropriately. □ “LT” Poor behaviour at lunchtime.

### Today's and upcoming managed detentions

Detention session	When event occurred	Event and managed detention
<i>No managed detentions recorded.</i>		

If a student’s behaviour is not as expected, teachers may set a detention as a punishment and to give an opportunity for the teacher to talk to the student so they understand the implications of their behaviour and behave better in future. If students do not attend the teacher’s detention they are given a Head of Faculty detention. If they do not attend that detention they are given a Senior Leadership Team detention which is recorded in this “managed detentions” section. These are very serious and students should avoid them.

### Behaviour over time



The behaviour over time charts show a summary of all the points to date. The green bars on the top of the line represent positive points and the red bars below the line represent negative points. On the line graph, the green line represents all the positive points and the red line represents the negative points. The blue line is the total points when the negative points are subtracted from the positive points.

### Progress and Reports

#### Progress and reports

Subject	24 Jan 2018	18 Jul 2018	Current
Biology	5	7	7
Business	5+	5+	5+
Chemistry	5	7-	7-
Comp. St.	6	7+	7+
English Lit	5	5+	5+
Geography	6	6	6
German	3	4	4
Maths	5	5	5
Physics	5	7	7
R.E.	6+	6+	6+

This section gives you a summary of the assessments recorded at each report stage. These snapshots of current data will be taken at the end of terms 2, 4 and 6. If you click on “View report” you can see all the data recorded at that time. The last column, “Current” gives a summary of all grades at the time of viewing the page.

I hope you find this guide helpful. If you have any queries please email [smasterson@spires.anthemtrust.uk](mailto:smasterson@spires.anthemtrust.uk)