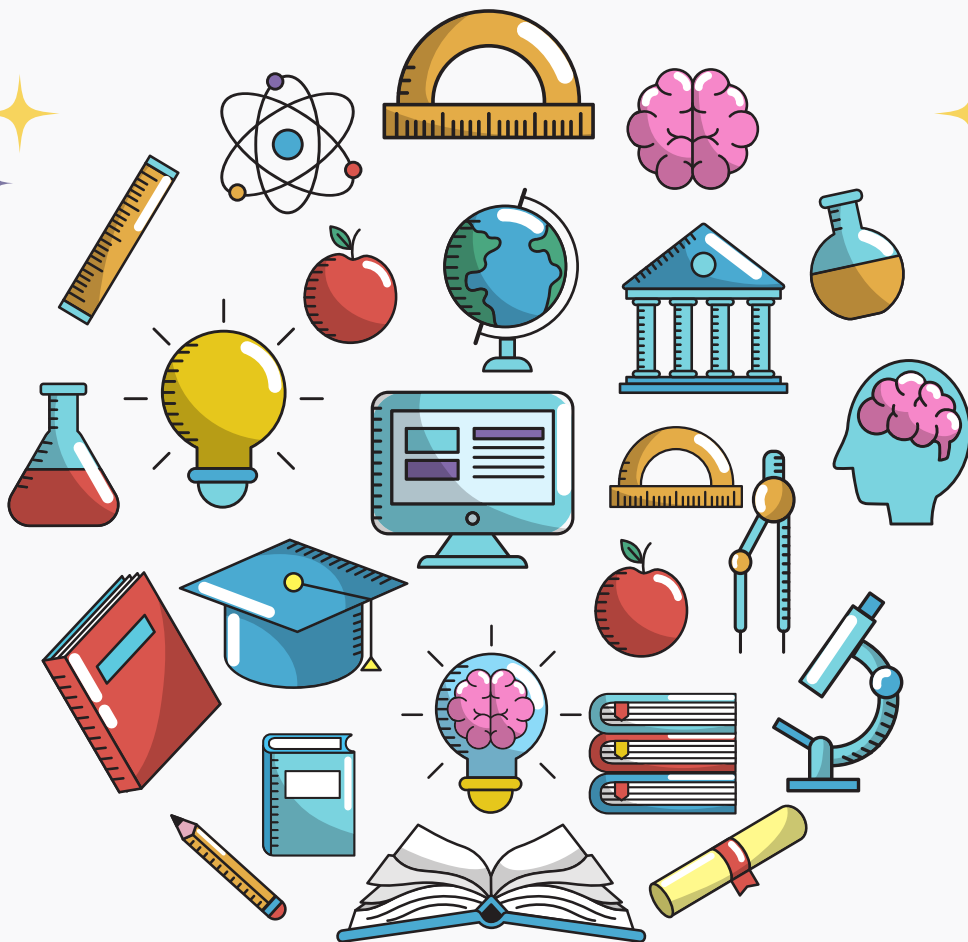



Oxford Spires Academy

EXTRA-CURRICULAR HANDBOOK



Oxford Spires Academy



LUNCHTIME TIMETABLE

	MONDAY	TUESDAY	WEDNESDAY	THURSDAY	FRIDAY
YEAR 7	BASKETBALL	CLUB BRASIL MUSIC TECH DRAMA	CHRISTIAN UNION		LUNCHTIME LECTURES
YEAR 8		BASKETBALL CLUB BRASIL MUSIC TECH DEBATE DRAMA	CHRISTIAN UNION		LUNCHTIME LECTURES
YEAR 9		CLUB BRASIL MUSIC TECH DRAMA	CHRISTIAN UNION BASKETBALL		LUNCHTIME LECTURES
YEAR 10		CLUB BRASIL MUSIC TECH	CHRISTIAN UNION	BASKETBALL	LUNCHTIME LECTURES
YEAR 11		CLUB BRASIL MUSIC TECH	CHRISTIAN UNION		BADMINTON LUNCHTIME LECTURES

AFTERSCHOOL TIMETABLE

	MONDAY	TUESDAY	WEDNESDAY	THURSDAY	FRIDAY
YEAR 7	NETBALL FOOTBALL (BOYS)	CREATIVE WRITING	FOOTBALL (GIRLS)	JAZZ BAND MATHS FITNESS ART EDI RUGBY CHESS	SNAKE CARE
YEAR 8	NETBALL FOOTBALL (BOYS)	CREATIVE WRITING	FOOTBALL (GIRLS)	JAZZ BAND MATHS FITNESS ART EDI RUGBY CHESS	SNAKE CARE
YEAR 9	FOOTBALL (BOYS)	CREATIVE WRITING	FOOTBALL (GIRLS)	NETBALL JAZZ BAND MATHS FITNESS ART EDI RUGBY CHESS	SNAKE CARE
YEAR 10	FITNESS	CREATIVE WRITING	GIRLS FOOTBALL BASKETBALL FOOTBALL (GIRLS)	NETBALL FOOTBALL JAZZ BAND MATHS EDI RUGBY CHESS	SNAKE CARE
YEAR 11	FITNESS	CREATIVE WRITING	GIRLS FOOTBALL BASKETBALL FOOTBALL (GIRLS)	FOOTBALL JAZZ BAND MATHS EDI NETBALL RUGBY CHESS	SNAKE CARE

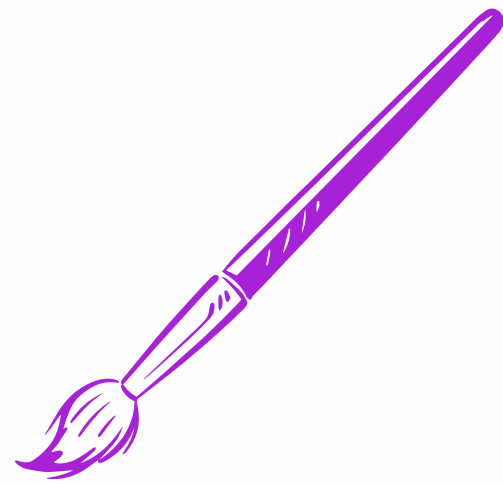
ART CLUB

WHERE: ART1

TIME: 3.10PM TO 4.00PM

THURSDAY	YEAR 7 - 9
-----------------	-------------------

Step into a world of imagination and colour with our Art Club! Whether you're a budding artist or someone who simply loves to create, our club offers a welcoming and inspiring environment to explore various artistic techniques and styles.



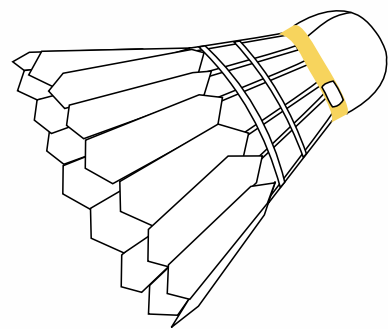
BADMINTON

WHERE: SPORTS HALL

TIME: 1.20PM - 1.55PM

FRIDAY	YEAR 11
---------------	----------------

Discover the thrill of badminton at our school's Badminton Club! All skill levels welcome. Join us today and unleash your potential on the court!



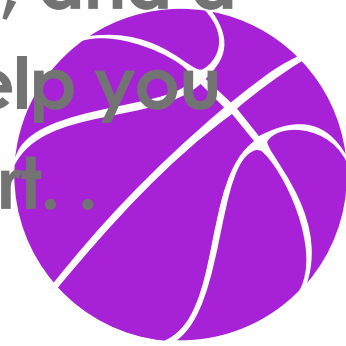
BASKETBALL

WHERE: SPORTS HALL

TIME: 3.10PM - 4.00PM

MONDAY	YEAR 7
TUESDAY	YEAR 8
WEDNESDAY	YEAR 9
THURSDAY	YEAR 10
FRIDAY	YEAR 11

Whether you're a seasoned player or new to the court, our team offers an exhilarating space to develop your skills and embrace the spirit of teamwork. Join us in intense training sessions, thrilling matches, and a supportive community that will help you thrive both on and off the court.



BREAKFAST CLUB

WHERE: WILLOWS

TIME: 08.00AM TO 08.30 AM

EVERYDAY	YEARS 7 -13
-----------------	--------------------

At our Breakfast Club, we believe that a nutritious breakfast is the key to a successful school day. Join us every morning for a quick, wholesome meal to fuel your body and mind. No one goes hungry here – because we know that a well-fed student is a ready-to-learn student.



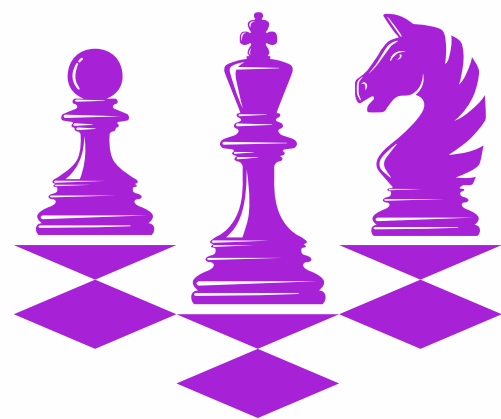
CHESS

WHERE: B14

TIME: 3.10 TO 4.00PM

THURSDAY	YEAR 7 -13
-----------------	-------------------

Whether you're a strategic mastermind or just starting to learn the game, our club provides a welcoming environment to sharpen your skills and explore the intricacies of chess. Participate in friendly matches, strategic discussions, and chess workshops led by experienced players.



CLUB BRASIL

WHERE: L4

TIME: 1.20PM - 1.55PM

TUESDAY	YEAR 7 -11
----------------	-------------------

Explore the vibrant world of Brazilian culture at Club Brasil! From the rhythmic beats of samba to the rich flavours of traditional cuisine, immerse yourself in the spirit of Brazil. All are welcome to join us in celebrating the diverse and colourful heritage of this captivating country. Don't miss out on this exciting cultural journey.



CHRISTIAN UNION

WHERE: H3

TIME: 3.10 TO 4.00PM

WEDNESDAY	YEAR 7 -13
------------------	-------------------

Step into the warmth of fellowship with the Christian Union, a school club dedicated to embracing faith, friendship, and community. In the Christian Union, students come together to explore the teachings of Christianity, share their spiritual journeys, and engage in meaningful discussions about faith and life.



CREATIVE WRITING

WHERE: E4

TIME: 3.10PM - 4.00PM

TUESDAY	YEAR 7 -11
----------------	-------------------

Unleash your imagination and join our Creative Writing Club today! Whether you're a seasoned wordsmith or a budding storyteller, our club offers a nurturing space to explore the boundless realms of creativity. Engage in inspiring writing prompts, peer workshops, and literary discussions that will ignite your passion for storytelling.



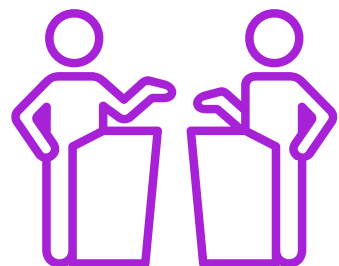
DEBATE

WHERE: H8

TIME: 1.20PM TO 1.55PM

WEDNESDAY	YEAR 8
------------------	---------------

Are you passionate about shaping the future? Do you thrive on intellectual challenges and love the thrill of a compelling argument? Look no further! Our Debate Club offers you the perfect platform to sharpen your communication skills, expand your knowledge, and engage in stimulating discussions that matter.



DRAMA

WHERE: DRAMA STUDIO

TIME: 1.30PM - 2.00PM

TUESDAY	YEAR 7 -9
----------------	------------------

The club provides a platform for students to explore their passion for acting, scriptwriting, and stage production.

Through regular rehearsals, performances, and workshops, members develop their theatrical skills and gain confidence in public speaking. Drama Club fosters a lively and inclusive environment, encouraging self-expression and a love for the performing arts within the school community.



EQUALITY, DIVERSITY AND INCLUSION

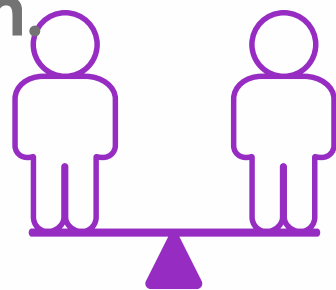
WHERE: D5

TIME: 3.10PM - 4.00PM

THURSDAYS

YEAR 7 - 13

Step into a world where acceptance knows no bounds, and differences are not just embraced but celebrated. The Equality, Diversity, and Inclusion Club is a vibrant haven within our school, dedicated to promoting a culture of respect, understanding, and unity among our diverse student body. We believe in the power of equality, the beauty of diversity, and the strength of inclusion.



FITNESS

WHERE: FITNESS SUITE

TIME: 3.10PM - 4.00PM

MONDAY	YEAR 7 - 9
THURSDAY	YEAR 10 - 11

The club focuses on promoting physical well-being through regular workouts, discussions on healthy living, and engaging activities. Students have the opportunity to participate in group exercises, learn about fitness principles, and develop a positive approach to a healthy lifestyle.



FOOTBALL

WHERE: FIELD

TIME: 3.10PM - 4.00PM

MONDAY	YEAR 7, 8 AND 9 BOYS
WEDNESDAY	YEARS 7 -11 GIRLS
THURSDAY	YEAR 10 AND 11 BOYS

Join the team and experience the thrill of the beautiful game. With expert coaching and a supportive team, you'll have the chance to hone your skills and showcase your talent on the field. Whether you're a seasoned player or just starting out, our football team is the place to be.



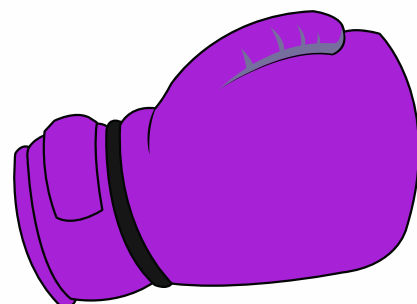
GIRLS BOXING

WHERE: SPORTS HALL

TIME: 3.15PM TO 4.15PM

THURSDAY	YEAR 7 - 9
-----------------	-------------------

Engage in dynamic training sessions, empowering workshops, and a community of like-minded individuals who share a passion for the sport. With expert coaching and a focus on physical and mental well-being, we're dedicated to helping you unleash your full potential.



JAZZ BAND

WHERE: PA4

TIME: 3.10PM - 4.00PM

THURSDAY	YEAR 7 -11
-----------------	-------------------

Feel the rhythm and join our Jazz Band today! Whether you're a seasoned musician or a budding instrumentalist, our band offers a vibrant space to explore the captivating world of jazz. From smooth melodies to upbeat improvisations, be part of a community that celebrates the timeless art of musical expression.



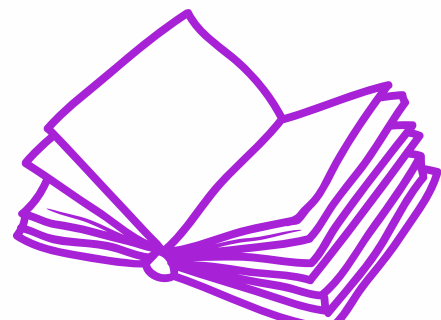
LIBRARY

WHERE: LIBRARY

TIME: 8.00AM TO 4.00PM

EVERYDAY	YEAR 7 -13
-----------------	-------------------

Whether you're an avid reader, a researcher, or someone seeking a quiet place to study, our library offers a welcoming sanctuary for all. Discover a vast collection of books, resources, and digital archives that cater to diverse interests and academic pursuits.



LUNCH HUB

WHERE: D5

TIME: 1.20PM TO 1.55PM

EVERYDAY	YEAR 7 -13
-----------------	-------------------

Need a peaceful oasis to focus on your homework, dive into a good book, or simply unwind? Look no further! Our Lunch Hub provides the ideal sanctuary for students seeking a quiet space to complete assignments, engage in mindful activities, or simply enjoy a moment of tranquility amidst the school day.



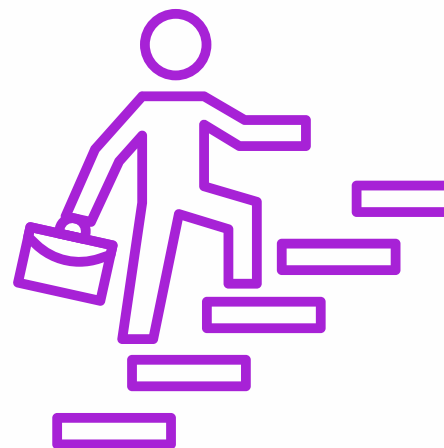
LUNCHTIME LECTURES

WHERE: THEATRE

TIME: 1.20PM - 1.55PM

FRIDAY	YEAR 7 -13
---------------	-------------------

Join us during your lunch break to hear from professionals in diverse fields, gain valuable advice, and expand your understanding of different career options. Embrace this opportunity to connect with industry experts and get inspired for your own professional journey. .



MATHS FOR FUN

WHERE: M4

TIME: 3.10PM - 4.00PM

THURSDAY	YEAR 7 -11
-----------------	-------------------

Engage in stimulating problem-solving sessions, intriguing puzzles, and collaborative discussions that will expand your understanding of this captivating discipline. From geometry to calculus, our experienced mentors will guide you through the intricacies of the mathematical universe. .

$$\frac{x}{a} + \frac{y}{b} = 1$$

MOCK BAR

WHERE: SIXTH FORM AREA
TIME: 3.10PM TO 4.00PM

WEDNESDAY

INVITE ONLY

Step into the world of courtroom drama at our Mock Trial Bar! Whether you aspire to be a lawyer, enjoy debating, or are curious about the legal system, our mock trial sessions provide an exciting opportunity to hone your argumentative skills and understanding of the law.



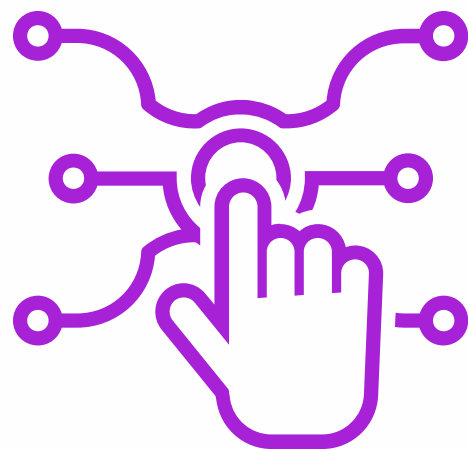
MUSIC TECH

WHERE: PA8

TIME: 1.20PM - 1.55PM

TUESDAY	YEAR 7 -11
----------------	-------------------

Join us in hands-on workshops, creative sound design sessions, and collaborative projects that blend the art of music with cutting-edge technology. Discover the magic of digital music production and audio engineering under the guidance of experienced mentors..



NETBALL

WHERE: COURTS

TIME: 3.10PM - 4.00PM

MONDAY	YEAR 7 AND 8
THURSDAY	YEARS 9, 10 AND 11

Join the Netball team and experience the thrill of the game! Open to all skill levels, our team fosters sportsmanship, teamwork, and fun. Don't miss out on the chance to be a part of this exciting journey. Sign up now and let's score some goals together!



RUGBY

WHERE: FIELD

TIME: 3.10PM - 4.00PM

THURSDAY	YEAR 7 - 11
-----------------	--------------------

The club emphasizes teamwork, discipline, and physical fitness through regular training sessions and friendly matches. Students get hands-on experience with the sport, learn the rules of rugby, and build a strong sense of camaraderie. The Rugby Club fosters a love for the game and encourages a competitive yet sportsmanlike spirit among its members.



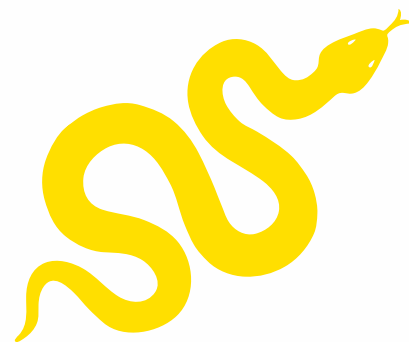
SNAKE CARE

WHERE: S10

TIME: 3.10PM - 4.00PM

FRIDAY	YEAR 7 - 13
---------------	--------------------

The club aims to educate members about snake care, behavior, and conservation. Students have the opportunity to observe Monty's behaviour, learn about snake anatomy, and even handle the snake under supervision, fostering a sense of responsibility and respect for these fascinating creatures.



YOUNG ENTERPRISE

WHERE: ENTERPRISE SUITE
TIME: 3.10PM - 4.00PM

MONDAY AND THURSDAY	INVITE ONLY
--------------------------------	--------------------

Our program offers a dynamic platform for young minds to cultivate business skills, foster creativity, and develop real-world projects. From creating business plans to marketing strategies, our experienced mentors will guide you every step of the way.

